



SUSTAINABLE PRACTICES

FLORIDA STATE UNIVERSITY

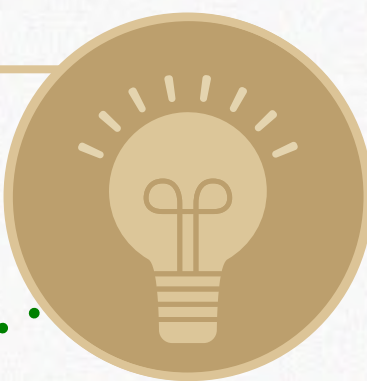
University Housing provides exceptional living opportunities for students to succeed academically.

Sustainable Practices in University Housing

Our housing facilities team values stewardship and resource management. We hope this guide sheds light on our efforts to operate our residence halls effectively and efficiently, even if many of them take place behind the scenes.

Lighting

LEDs help us drastically cut energy use and longer bulb life. Motion/occupancy sensors in appropriate areas help ensure lighting energy is used only when needed.



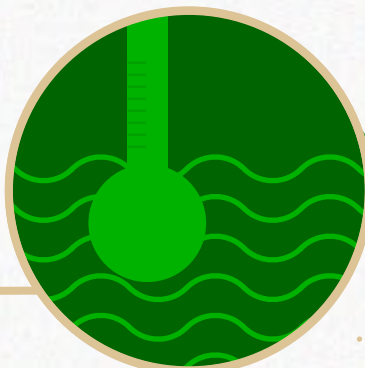
Automation

Utilize building automated systems to save energy, be efficient, and extend equipment life.



Tankless Water Heaters

On-demand heating to eliminate energy usage when not needed.



Fan Wall Technology

Utilizes multiple fans for continuous service and scalability to meet variable loads.



LEED Certifications

Certified: Traditions, Dorman, Deviney
In process: Azalea and Magnolia.



Water

De-scaling devices installed on water lines for maximum, efficient water flow to residence halls.



Low-Flow Fixtures

Use of low-flow fixtures in the kitchen, bathroom, and shower areas to keep water consumption low.



Preventative Maintenance

Servicing air filters, coils, generators, belts, and more on regular basis to extend equipment life and deter failures.



Green Products

Eco-friendly products used to promote a safe environment (e.g. microfiber cleaning cloths, cleaning solutions, recycled paper products).



Appliances with Energy Star ratings are preferred and used when possible for energy savings.

Buildings are constructed for a 75 to 100-year lifespan, significantly reducing the amount of waste and consumption generated by shorter construction lifecycle types.

Foundations for Success

Appropriate custodial staffing (at Level 1 APPA Staffing Standard) ensure long-life of buildings and materials.

UH student groups coordinate with FSU Sustainable Campus on initiatives such as:

- Chuck It For Charity
- Eco-Rep program with IRHC/Hall Council
- Turn Down for Watt



Responsible Consumption

REDUCING

Online work order submission process to reduce paper waste on the 10,000+ work orders processed each year.

REUSING

Any excess paint accumulated is shared with other campus departments. Other examples of material reuse/refurbishing are:

- Furniture
- Motors/pumps/drives
- Plumbing & shower heads
- Door knobs & locks
- Breaker panels

We also participate in the Clean Sweep program that FSU Surplus Property periodically facilitates.

RECYCLING

We provide a recycling program for each residence hall that includes:

- Recycling bins in each room, and recycling collection points on each floor.
- Centrally located cardboard and paper recycling in each hall.
- Large roll-off dumpsters for cardboard recycling available during Summer C and Fall opening.
- For any new large furniture installation, we also recycle the cardboard.
- Our Maintenance and Supply operations coordinate with FSU Recycling Center for various types of scrap metal recycling.



109 ASKEW STUDENT LIFE BUILDING
HOUSINGINFO@FSU.EDU
(850) 644-2860 (850) 644-7997
FSUHOUSING @ HOUSINGFSU